
Wachusett Greenways



2015 Annual Report

WACHUSETT GREENWAYS GROWING UP

You are setting a strong foundation for generations of neighbors to connect along greenways. Wachusett Greenways members, donors, volunteers and friends energize and inspire each other as we share the mission of connecting the Wachusett communities with trails and greenways.

Wachusett Greenways, 21 years young now, has enriched the quality of life in the Wachusett region, but still many accomplishments await. You are the heart of Wachusett Greenways as we seek to connect our communities outdoors. Outdoor enthusiasts daily express their gratitude for the Mass Central Rail Trail (MCRT) and for the work we do together.

Our primary partner, the Massachusetts Department of Conservation and Recreation, continues to share the vision for stewardship of the MCRT as we work to connect all 30 miles of the treasured MCRT. The Wachusett towns and Worcester regional foundations also help sustain our vital community partnership.

Thank you! We look forward to working together in 2016.

Gratefully! Your Wachusett Greenways Directors

Colleen Abrams, Chair

Steve Chanis

Jeff Keay

Gordo Elliott (retired 9/2015)

Christy Barnes

Dave Fitzpatrick, Treasurer

Mike Peckar, Secretary



MEMBERS MATTER!

Greenways is grateful to each and every person, family and organization who share the commitment to connecting our communities with trails through their membership and contributions to the Mass Central Rail Trail Construction Fund. In 2015 we welcomed 805 members, including 75 new members. A total of 382 donors contributed to the MCRT Construction Fund. Altogether 816 individuals, families and businesses donated to Wachusett Greenways as members or MCRT donors. Our donors hail from two countries (USA and Spain), 14 states and Washington DC, and 77 towns.

I made a post on my Facebook page that reaches 612 people and asked for support from some I know use the Rail Trail. Hopefully it helps reach the goal. (1000 members) Good luck!

Sue M., Shrewsbury

MCRT DESIGN AND CONSTRUCTION CONTINUES WITH GRANT SUPPORT

Grant support from the Commonwealth of Massachusetts Department of Conservation and Recreation (DCR) and regional foundations is central to our partnership progress. Together we are tackling high-impact projects on the Mass Central Rail Trail (MCRT).

DCR awarded two Partnership Matching Funds Program grants and a Recreational Trails Program grant, which will support the engineering and design of the MCRT connection at the Rt. 140/Beaman



Street causeway in West Boylston. Wachusett Greenways will provide the match for all three grants. The grants were secured in 2015, and the design will be completed in 2016. WG has also applied for a 2016 construction grant from the DCR Recreational Trails Program for the first phase of construction from the MCRT trailhead in West Boylston through the Rt. 140 crossing at the approach to the causeway.

An earlier DCR Recreational Trails Program grant will help fund MCRT upgrades in Rutland, Holden and Sterling in 2016. WG will add at least a 20% match for the grant with additional funding and in-kind services.

In Rutland, WG intends to construct the MCRT connector along Miles Road near the welcome center in 2016. The route will curve to make a grade of 5%, making it accessible to all.

The DCR expects to support the repair of a damaged embankment at one bridge over Parker Brook in Oakham and the upgrade of the bridge at the Quag/West Lake Washacum in Sterling.

A special 2015 year-end gift from the Trustees of the George I. Alden Trust will help with these important MCRT construction projects.

REACHING OUT

Spreading the word about the wonderful outdoor resources we have available close to home and learning from others is an important part of Wachusett Greenways' mission.

Volunteers were on hand at the Earth Day event at University of Massachusetts Medical Center in April, raising awareness of Wachusett Greenways among folks both local and from far and wide. The ability to talk one-on-one with people is a great way to spark interest. Our volunteers also hosted a table at Holden Days in August to make people aware of Wachusett Greenways and all it has to offer.

From spring through fall, volunteers took periodic "trail counts," offering another opportunity, not only to meet new people using the trail, but also to gain important feedback to help us better serve those visitors. Trail counts were held in Rutland, West Boylston and Holden.

Wachusett Greenways directors attended the annual State Trails Conference in November, which was led by Paul Jahnige and Amanda Lewis of DCR's Trails and Greenways Program, and the Massachusetts Recreational Trails Advisory Board (MARTAB). Trail enthusiasts from across the Commonwealth serving with government agencies, town committees and nonprofit groups gathered to inspire and encourage one another.



WELCOME CENTER 2015

During 2015 landscaper Doug Hagman provided his much appreciated gifts of mowing and leaf removal for the future Welcome Center at 21 Miles Road, Rutland. The Stidsen family, of Sentry Oil, donated heating-system maintenance and heating oil. Greenways is thankful for neighbors Everett Reynolds, Lynda Lambert, Seth Stidsen and Dave Camarra for their watchful care, including snow removal and other light maintenance. Director Christy Barnes continued as a steward with support from Greenways volunteers, and Jeff Keay and the Garden Team constructed raised garden beds (see separate story).

To welcome visitors to 21 Miles Road in 2016, Greenways must construct the accessible ramp. In early 2016 Joe Sansoucy completed drainage improvements. Greenways also hopes to make the Mass Central Rail Trail connection along Miles Road in 2016.

OUTINGS TO PLEASE EVERY TASTE AND SPIRIT

From hikes to cycling to canoe/kayaking, 2015 offered something for every outdoor enthusiast. And though the weather cooperated for most of our events, inevitably mother nature had other ideas on some occasions.

The events calendar kicked off with a hike on New Year's Day. Greenways ultra-volunteer Ed Yaglou teamed up with members of the East Quabbin Land Trust along the new section of the MCRT in Hardwick and New Braintree.

We welcomed April with an easy-going full-moon evening walk along the MCRT in Rutland. April brought a rare pink-moon, offering a wonderful view of the rising orb over Thayer Pond along the way. Later that month, we hiked in Leominster State Forest on a beautiful spring day.

On a sparkling Saturday in May, we walked the Healthy Heart Trail at Moore State Park in Paxton. Early spring migrant birds treated us to their welcoming songs, and the captivating pulse of the waterfalls under Enchanta Bridge delighted all.

Then, in June we hosted a relaxing and moderate hike at Porcupine Hill in Holden, land owned by the White Oak Land Conservation Society. There we witnessed the stunning whiteness of mountain laurels in full bloom. One hiker remarked that so much whiteness greeted the group that she thought at first they had come upon a snowfield left from the winter's tremendous snowfall. And on



a beautiful June evening, Margaret Lock welcomed an enthusiastic group to canoe/kayak right from her home on West Waushacum Pond and through the Quag in Sterling.



Later, in October, Greenways President Colleen Abrams led a casual





14-mile bike ride on the MCRT in Rutland. We enjoyed great cycling weather and fall colors, capping the excursion with a picnic lunch at the 110-foot trail bridge just off Rt. 122. Also in October, we made remote Sholan Point on Wachusett Reservoir our destination on a five-mile hike along logging roads and the water's edge in West Boylston. We walked along beautiful lily ponds and traversed French Hill through mature white pine and oak forest, some of us scrambling over this rocky knoll to get million-dollar views of the reservoir.

THE TEACHING GARDEN PROJECT

A teaching garden project will soon be a new addition to the Wachusett Greenways Welcome Center at 21 Miles Road, Rutland. Greenways volunteers who made it happen included Christy Barnes, Barbara Campbell, Troy Milliken, Steve Chanis and Mike Peckar, with Jeff Keay leading the effort.

Reclaimed fir timbers from the Wachusett Watershed Regional Recycle Center were cut to proper dimensions by Mark Koslowske, before volunteers stained all the timbers and constructed four 4 x 8 ft. raised beds. In spring 2016, the raised beds will be filled with soil and compost, with planting and tending the garden to follow.

The WG Garden Committee continues to form the broader goals of the teaching garden project. Committee members include Jeff Keay, Colleen Abrams, Christy Barnes, Barbara Campbell and Trish VanderPloeg. One goal they envision is teaching workshops somewhat following the approach of the *Growing Places Garden Project* in Central Massachusetts. The Committee is looking for volunteers to tend to the garden and instructors to lead garden workshops. In addition, the committee wants to find a Garden Coordinator. To learn more, contact Jeff at jkeay23@gmail.com.



SPRINGDALE MILL CELEBRATION!

More than 50 years ago, Ruth and Dick Spaulding and their children took a special interest in the building stones peeking through the overgrowth in the woods down the hill from their home in Holden. Four decades later, neighbor David Kaplan shared his keen interest in local history and his vision for heritage preservation. With funding support from the Kaplan family and Greater Worcester Community Foundation, a whole team began to develop the Springdale Mill Interpretive Site. Wachusett Greenways, the DCR, Holden Historical Society and committed neighbors completed the Site, which is dedicated to sharing the story of a 19th century woolen mill community.

Now a much-visited interpretive historic site, WG hosted the 11th Springdale Mill Celebration here in September. This popular family event is held on the last Saturday of each September. Staffed by the Springdale Mill Committee and many volunteers, with donated food and supplies, and music by the Paddock Brothers, this is a happily anticipated annual event.

Besides the perennial favorite face painting, performed by students in the WPI chapter of AΦΩ national service fraternity, this year's hit activity was the "hula hoop lady," Sarah Daly, who brought a supply of hoops and coaxed everyone who dared to try it. The WPI volunteers and Sterling Junior Girl Scouts were kept busy escorting children on scavenger hunts and crafting string bracelets. DCR rangers led the Children's Journey to the Mill, a 1.5-mile jaunt to the mill site, while pointing out interesting facts of nature. Years ago Chas Paddock, of West Boylston, wrote a heart-felt song about the rail trail, which he featured again for all to enjoy.

The Springdale Mill Committee and the whole Spaulding family prepares for the big day, including weeding, pruning, mowing, transporting the big model steam engine





and barbeque grills, with additional set-up help from the WPI students. Donated treats include hot dogs and sausage from Leroux Meat and Deli, apples from Clearview Farm, cookies from Oakdale Rehabilitation, supplies from Walmart, and help from the entire committee. Committee chairperson Ruth Spaulding says, "Just being there, enjoying the fellowship is my favorite part of the day." Other committee members are Colleen Abrams, Jim Lafley, Chuck Skillings, Janet Olson, Jessica Wolfe and Ed Yaglou. Mark your calendar for next year's celebration on September 24, 2016.



MAKING HIS MARK

When it came time for Zach Goodwin of Holden Boy Scout Troop 182 to choose an Eagle project, he knew he wanted to work on either the rail trail (MCRT), or the waterfront. Luckily for Wachusett Greenways—and for everyone who enjoys the Rutland and Barre sections of the MCRT—he chose the rail trail.

Eagle Scout is the highest rank in Boy Scouting; according to the Boy Scouts of America, just 7% of eligible Scouts earned that designation in 2013. Prospective Eagle Scouts must complete a rigorous set of requirements, including merit badges, six months in a troop leadership position, and a community-service project. For his project, Zach decided to install mile markers along the MCRT from Glenwood Road in Rutland to the Ware River bridge in Barre, a distance of more than nine miles.

To ensure accurate measurements, he walked this section of the trail several times with multiple surveyor's wheels. "Each wheel tried to tell us something a little different," Zach recalls. The next step was to water-cut and laser-etch 50 mile markers and install them every 0.2 miles along the trail.

Zach completed his project and earned the rank of Eagle Scout just a few months before heading off to study physics at Alfred University in Alfred, NY, leaving behind a legacy in his community that really goes the distance!



BEST BISCOTTI AND WARM WELCOME FOR THE MAILING TEAM

Here's a Wachusett Greenways activity you can do in any weather. No need to worry about rain, snow, ice, mosquitoes or ticks. Because it's all indoors! In 2015 five mailing sessions were held, and a revolving crew of about 20, led by S. Jane Arntz, tackled the task of labeling and preparing for the mail newsletters, our annual report, and other printed notices.



The team typically meets on a weekday morning in space kindly made available by the First Baptist Church in Holden. Coffee and biscotti are served, and the team is a very friendly group. To join the team, please contact S. Jane Arntz at 508-829-7396 or sjaj12@hotmail.com.

WACHUSETT GREENWAYS, INC.

Statement of Revenue and Expenses Year Ended December 31, 2015

INCOME

Unrestricted

Membership Income	\$ 39,551
Product Sales	1055
Contributions From Towns	2800
Interest Income	924
Total Unrestricted	<u>44,330</u>

Temporarily Restricted

MCRT Donations Received	<u>51,427</u>
TOTAL INCOME	<u>95,757</u>

EXPENSES

Unrestricted

Accounting and Tax Filing	3670
Bank Fees	150
Meerkat Fees	317
Constant Contact	357
Office Supplies	1297
Printing and Copying	4174
Outreach	434
Insurance	4732
Welcome Center Maintenance and Utilities	860
Portable Toilets	4108
Postage and Mailing	1724
Training	337
Trail Maintenance	430
Fund Raising	43
Welcome Center Depreciation	<u>2664</u>

Total Unrestricted Expenses	<u>25,297</u>
-----------------------------	---------------

TOTAL EXPENSES	<u>25,297</u>
----------------	---------------

EXCESS OF REVENUE OVER EXPENSES	<u>\$ 70,460</u>
---------------------------------	------------------

WACHUSETT GREENWAYS, INC.

Balance Sheet December 31, 2015

ASSETS

Current Assets		
Bank Accounts	\$ 269,309	
Prepaid Expenses	<u>2,250</u>	
Total Current Assets		\$ 271,559
Fixed Assets		
Welcome Center Building - Rutland	106,551	
Accumulated Depreciation	(2,664)	
Land - Rutland	<u>161,150</u>	
Total Fixed Assets		265,037
Other Asset - Prepaid DCR Grant		<u>100,000</u>
TOTAL ASSETS		\$ 636,596

LIABILITIES AND EQUITY

Current Liabilities - Accounts Payable		\$ 0
EQUITY		
Unrestricted Net Worth	\$ 288,868	
Temporarily Restricted Net Worth	316,368	
Permanently Restricted Net Worth	<u>31,360</u>	
Total Equity		636,596
TOTAL LIABILITIES and EQUITY		\$ 636,596

Statement of Net Current Assets as of December 31, 2015

	<u>12/31/2014</u>	<u>12/31/2015</u>
PERMANENTLY RESTRICTED		
MCRT Endowment Funds	\$ 31,360	\$ 31,360
TEMPORARILY RESTRICTED		
Kaplan Development Fund	6,450	6,450
MCRT Construction Fund	156,491	207,918
UNRESTRICTED		
Maintenance, Membership, and Management	<u>4,134</u>	<u>25,831</u>
TOTAL	\$ 198,435*	\$ 271,559*

*Both of the above totals do not include \$100,000 prepaid Partnership Matching Program funds paid to Mass DCR.

Statement of Net Worth Balances Year Ended December 31, 2015

	<u>Unrestricted Net Worth</u>	<u>Temporarily Restricted</u>	<u>Permanently Restricted</u>	<u>Total Net Worth</u>
BALANCES, DECEMBER 31, 2014	\$ 269,835	\$ 264,941	\$ 31,360	\$ 566,136
Income for 2015	\$ 44,330	\$ 51,427	\$ 0	\$ 95,757
Expenses for 2015	\$ (25,297)	\$ 0	\$ 0	\$ (25,297)
BALANCES, DECEMBER 31, 2015	\$ 288,868	\$ 316,368	\$ 31,360	\$ 636,596

A BENCH IN TIME

When you choose a bench engraved in memory or in honor of loved ones, you will provide a place for rest and meditation for many people for decades, and you'll help complete the Mass Central Rail Trail. When a donor's contributions for the MCRT Construction Fund reach \$1,000, the donor may have an engraving on a trailhead pillar. Donors who reach \$5,000 may select a granite bench engraving.



Several engravings were chosen in 2015 and will be completed in spring 2016. Engraving on the West Boylston pillar is complete for Joan Russo and Jane Beckwith. In 2016 benches will be installed on the trail with engravings for Bob Lacouture and Rebecca Taylor, Gordon Elliott Family, Rich and Jan Helle, and Walter B. & Beatrice R. Neuburg.

Our members express their delight with benches engraved for loved ones:

"My favorite place to walk – love the benches especially the one for my daughter, Elise Gagne." ~ *Marybeth, Holden*

"I love visiting my Dad and Mom's bench (Rogers and Pat Johnson).

It really is such a perfect spot. Take care." ~ *Anne & Craig, Shrewsbury*

CONNECTIONS ALL AROUND!

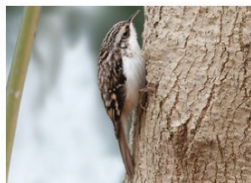
We hope you've had a chance to visit Wachusett Greenways on our updated and expanded website, "Like" us on our Facebook page, and Follow us on Twitter. It's all at www.wachusettgreenways.org. These sites provide useful news and information about the trails and greenways we manage, and upcoming events, plus lots of stunning photos by many sharp-eyed Greenways friends.

You can also stay connected by joining our email distribution list. This enables you to receive occasional updates and other news you can use, including *The Connector*, our semiannual newsletter. Sign-up is a breeze, also on the website. And of course we publish the year in review in the *Annual Report* you're reading now.

Your comments are always welcome, as are volunteers to help with writing and photography. The website contains a contact form, or email Ken at klmcdonn@gmail.com.

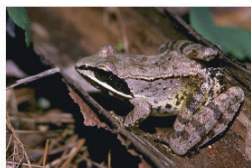
Wachusett Greenways's Constant Contact periodically sends email updates, so you won't miss any events!

**Wachusett
Greenways**
Connecting the Wachusett Communities with
Trails and Greenways



A Joyful Day!

Check out the Mass Central Rail Trail today or any day and revel in the welcomed signs of spring. Bask in the shining sun. Listen to the high song of the herons croaking in this sludge. Hike brown bird moves up a tree trunk. Notice the thrifty, duck-like call of the wood frogs from small pools along the trail. Greet your neighbors as they enjoy the peaceful woodland trail with you.



**Hike Rutland Brook Wildlife
Sanctuary, Petersham**
Saturday, March 19, 9:30-11:30 AM.
Wachusett Greenways members and friends are welcome to participate in this outing with the Worcester Section of the Green Mountain Club. Hike at the Rutland Brook Wildlife Sanctuary in Petersham. We will hike about 3-4 miles. This is a lovely woodland property of Mass Audubon and is not to be missed. Meet at 9:30 AM at the parking lot on Rt. 122 at the trailhead to the Midstate Trail/Mass Central Rail Trail in Rutland. We will car pool to the Rutland Brook Wildlife Sanctuary, which is off Pat Connor Road in Petersham. Pat Connor Road is



VOLUNTEER TEAMS SPARKLE

Again in 2015, many teams of dedicated volunteers from local schools, scouts, and faith-based organizations did their part to augment the work of Greenways members. No task is too challenging for these hearty folks, no weather too daunting, and Greenways applauds their support for our mission: connecting the Wachusett communities with trails and greenways and to maintain this wonderful resource with deep pride.

The WPI chapter of the ΑΦΩ, the national co-ed service fraternity, again completed several days of outstanding service, while giving its members opportunities to develop leadership skills and lifelong commitment to community service and friendship. For some 14 consecutive years, APO members have done everything from cleaning drainage ditches, to moving downed branches and other debris,



THANK
YOU!





to welcoming guests at the annual Springdale Mill Celebration.

Once again, local schools also came out to help in 2015. Bancroft School of Worcester, another perennial friend of Wachusett Greenways, mobilized eager, high-energy students from its 5th grade and Middle School for trail work over several days during the year. St. John's School of Shrewsbury continued its several-years-long service commitment to Greenways as well. Its upper-class students and their family support teams brought unflagging vitality to every task asked of them on the rail trail.

Members of Rutland Junior Girl Scout Troop 30333 were out there with us again, too. Their service offered the "opportunity" to clear winter debris and leaves right in their own town along the rail trail passing through the scenic Charnock Cut and past Thayer Pond. And members of the Westborough Synagogue Family Mitzvah didn't hesitate to get their hands dirty, joining in the "labor of love" Greenways volunteering brings out in all of us.

Again, to one and all of these thoughtful, dedicated helpers, and of course to our regular member volunteers, a great big Thanks! for all you do.



BOOTS ON THE GROUND

The Mass Central Rail Trail (MCRT) has undeniable natural beauty. However, that splendor still benefits from many a helping hand from a dedicated team of volunteer patrollers who monitor the trail year-round for damage, debris and other issues.

Patrollers keep the trail clean, while also looking out for more serious problems, like fallen trees or beaver damming under bridges, to report to the MCRT Maintenance Coordinators.

Additional patrollers are always needed, so if you spend time regularly on a particular part of the Rail Trail, please consider signing up with Colleen Abrams at colleen.abrams@verizon.net or 508-479-2123; or Paul Hennessey at peh01543@charter.net or 508-886-6317. Even if you're not an official patroller, you can report any trail issues you notice.



And you can make patrollers' jobs a little easier by always carrying out your rubbish when you're enjoying the rail trail or moving broken branches well off the trail and beyond the drainage ditches.

Many thanks to the departing 2015 MCRT Trail Patrollers who served well:

Bob Hill and Gail Hartman have moved to Virginia, and we miss them. Grace Blydenburgh and Ron Marsh are taking a break from patrolling.

And thank you to the continuing 2015-2016 patrollers

Bruce Baker, Sterling—Cider Mill to Gates Rd.

Mike and Rachel Peckar, West Boylston—Oakdale to Holden Line

Evan Schakenbach and Gordo Elliott, Holden and West Boylston—River St. to WB line and River St. to Manning St. to Rt. 31

Lorraine Stewart, Holden—River St. to Manning St. to Rt. 31

Sheila Dibb, Rutland—Glenwood Rd. to Rt. 56

Hank and Viv Ouellette, Jere and Rachel Bradley, Karin Glidden and Carol Moore, Rutland—Pommogussett Tunnel to Miles Rd. at MCRT parking

Everett Reynolds, Rutland—Pommogussett Tunnel to Charnock Hill Tunnel

Bob Hill and Gail Hartman, Rutland—Miles Rd. to Charnock Hill tunnel

Paul Hennessey, Rutland—Charnock/Barrack/Whitehall (at State Park entrance road)

Joe Sansoucy, Whitehall Rd., Rutland to Coldbrook Rd., Oakham

Robin Peters, Rutland—Barrack Hill Road to State Park entrance road

OPEN – Rutland—Whitehall Rd. to Midstate Trail

Beth Hunt, Rutland—Rt. 122/Midstate to Muddy Pond outlet and ramp to Rt. 122 small parking lot

Joan Killough-Miller and Aria, Oakham—Muddy Pond outlet to Coldbrook

Walter "Jim" Potter II, Oakham/Barre—Rt. 122 crossing to Ware River crossing and rest stop

Jack Perreault and Mike Peckar, White Oak Trail, Holden

WACHUSETT GREENWAYS VOLUNTEERS 2015

Thank you to each of our wonderful volunteers and donors of in-kind goods and services! We are grateful for you. Please inform us of any errors or omissions.

VOLUNTEERS (INDIVIDUALS)

Colleen Abrams
Jim Abrams
Darcy Adshead
Rick Adshead
Larry Altobelli
Lori Altobelli
Doreen Amaral
S. Jane Arntz
Bruce Baker
Dan Ballantine
Christy Barnes
Elise Barry
Karl Barry
Lydia Barter
Wes Barter
Laura Beckwith
Rob Bennett
Robert Bertin
Harold "Slugger" Black
Grace Blydenburgh
Harold Boucher
Conor Boyan
Jere Bradley
Rachel Bradley
Daeg Brenner
Gary Brigham
Barbara Carlson
Dave Camarra
Barbara Campbell
Steve Chanis
Kate Deffke
Ted Del Donno
Sheila Dibb
George Dresser
Libby Easton
Gordo Elliott
Debbie Ennis
Dave Fitzpatrick
Betty Fogg
John Gau
Karin Glidden
Zach Goodwin
Greta Gridley
Claire Gurney
Pat Hackett

Doug Hagman
Persis Hamilton
Joanne Harper
Gail Hartman
Paul Hennessey
Bob Hill
Charles Homan
Beth Hunt
Bill Kadish
Jim Kamosky
Jeff Keay
Joan Killough-Miller
Dee Kormeluk
Dotty Kormeluk
Mark Koslowski

*My new favorite place.
Beautiful. (Also signed
on to volunteer)*

7/15 Krista and Van Murphy
Berube, Shrewsbury

Jim Lafley
Lynda Lambert
Peter Lindstrom
Margaret Lock
Ronaldo Lu
Ron Marsh
Barbara McCarthy
Gene McCarthy
Ken McDonnell
Wendy Miller
Troy Milliken
Sandy Moffett
Carol Moore
Carol Morin
Bob Oliver
Carol Oliver
Janet Olson
Hank Ouellette
Viv Ouellette
Chas Paddock
Mike Peckar
Rachel Peckar
Peder Pedersen



Bruce Pennino
Mike Perkins
Jack Perreault
Robin Peters
Bob Pezzini
Tom Pitman
Joan Platt
Walter "Jim" Potter
Ann Puffer
Kevin Quinn
Everett Reynolds
John Rives
Linda Rives
David Rosenfield
Moiria Rouse
Bruce Ruderman
Brett Russ
Dave Ryan
Joe Sansoucy
Amanda Sayut
John Scannell
Evan Schakenbach
Jim Schakenbach
Karen Shapiro
John Sherwin
Dave Simmerer
Michele Simoneau
Chuck Skillings
Ann Spaulding
Dick Spaulding
Maggie Spaulding
Roger Spaulding
Ruth Spaulding
Lorraine Stewart

Seth Stidsen
 Andrea Stone
 Bill Stuart
 Ruth Sweeney
 Dave Sweetman
 Joan Swenson
 Philip Thoman
 Robin Van Liew
 Trisha Vander Ploeg
 Phil Warbasse
 Clare White
 Steve White
 Dick Williams
 Jessica Wolfe
 Jonathan Woodward
 Ed Yaglou
 Geoff Yaglou

VOLUNTEERS (GROUPS)

Alpha Phi Omega of Worcester
 Polytechnic Institute
 Bancroft School 5th Grade
 Bancroft Middle School
 Students
 Holden Department of Public
 Works
 Holden Troop #180 Scouts
 assisting Zach Goodwin
 MA Department of
 Conservation and Recreation
 Rutland Department of Public
 Works

*I appreciate receiving the newsletter with
 timely notification of participatory events,
 and I know it's a lot of work! Thank you.*

11/ 15 Robert Fraser, N. Dartmouth

Rutland Junior Girl Scouts
 Troop #3033
 Saint John's School
 Sterling Cub Scout Pack #34
 Sterling Girl Scouts
 Sterling Department of Public
 Works
 West Boylston Department of
 Public Works

DONORS OF SERVICES AND PRODUCTS

Colleen Abrams
 Adshead Graphics
 Allatar, Larry Altobelli
 Karl Barry
 Dave Camarra
 Clearview Orchards
 Sarah Daly
 Dan Ferguson
 First Baptist Church, Holden
 Dave Fitzpatrick
 Doug Hagman Landscaping
 Holden DPW
 Holden Senior Center

Jed's Hardware, Jim Berube
 Jill Phelps Kern
 Leroux's Market
 MA Department of
 Conservation and Recreation
 Carol Morin
 Nal's Paint Center
 Oakdale Methodist Church
 Oriol Health Care – Oakdale
 Rehabilitation Center &
 Skilled Nursing Care
 The Paddock Brothers
 Mike Peckar
 Bruce Pennino, PE
 Linda Waldron Rives
 Rutland DPW
 Sentry Oil, Brian and Paula
 Stidsen
 Dick Spaulding
 S & S Farms
 Sterling DPW
 Ken Strom
 Walmart of West Boylston
 Ed Yaglou

Sue Hall, friend, member, and volunteer
 last participated with Wachusett
 Greenways at the Springdale Mill
 Celebration in September along with Paul
 Miller. On January 9, 2016 Susan Marsh
 Hall passed away. We will miss her warm
 smile and kind heart.

Sue was a steadfast member and
 thoughtful WG donor since 1999. She was
 a regular trail volunteer who loved to clip
 brush and clear sticks. She was always ready
 to scramble up a bank along the trail.

Sue and Paul teamed up for many hours
 of trail work. Paul wielded his chainsaw, and
 Sue dragged brush and logs. They also enjoyed leading and participating in WG
 bicycle rides, with Paul pedaling his recumbent cycle.



2015 GREENWAYS MEMBERS AND DONORS

\$5,000 or MORE

Ann Neuburg

\$1,000 to \$4,999

Jim and Colleen Abrams

Jane Beckwith

Yvonne S. Brown

Lawrence and Donna Espe

Dennis and Nancy Fitzgerald

Judith Green

Richard and Janice Helle

Rebecca Tayler and

Robert Lacouture

\$500 to \$999

Gerald and Loree Burns

Gordon E Elliott

Robert and Kathy Evans

Allen W. Fletcher

Gerald Gleich and

Francesca Bang

Alan Harris and Diane Lebel

David and Emily Hutcheson

Ted and Linda Robbins

John Sullivan

George and Barbara Bernardin

Kirk and June Bodwell

Thomas J. Boyden

Judy Breen

Daeg and Debra Brenner

Gary S. Brigham and

Lisa M. Brinkman

Christopher Brown

Tom and Nancy Buckingham

Elizabeth Burkett

Busy Bee Nursery & Landscape

Charles and Judith Butterfield

Richard and Peni Callahan

Cynthia A Carey

Central Mass Lyme Foundation
Inc.

Central Massachusetts Podiatry

Anne Chaffee and

Seth Dahlberg

Ed and Vivian Clarke

John Claussen

Donette Clifford

Clinton Savings Bank

Joseph H. Cohen III and

Elizabeth M. Benjevin

Lisa Hugo

Anthony Costello and

Judy Haran

Ken and Katherine Cranson

Charlie Croteau

Abby and Will Csaplar

Thomas and Ann Dalton

David and Karen Davis

Eric and Julianne De Rivera

Glenn C. DeMallie

Kevin and Jeanne Depasse

Karen and Randy Derby

Roger and Linda Deschenes

John Dieckmann

Ross and Lisa Dik

Craig and Anne Dodson

Ian and Sandra Donaldson

Bob and Janet Dore

George Dresser and

Margaret McCandless

Tom and Lori Dunne

Susan and Chris Durham

EcoTec Inc.

John and Kathy Egan

Karen Eisenhower and

Rachel Gerstein

Jonathan and Caroline Ely

Tracy and Karl Erickson

Linwood Erskine Jr.

Philip J. Eugene

Robert and Shirley Fancy

George and Suzanne Faucher

Rodney Ferris

David and Maria Fitzpatrick

Jean-Pierre and Ann Flatt

Warner and Mary Fletcher

Betty A. Fogg

Martha Forkey

Jim and Michelle Fraser



Burt and Margaret Frost

Gary and Karen Gaskin

Deborah Giniewicz

Danielle and Jay Glaser

Bob and Linda Green

Mark and Linda Greene

Philip and Sophie Guimond

Claire Gurney

Richard Haas and Ann Mitchell

Tom and Pat Halpin

Richard A. Haskins

Sally M Hayden

Daniel and Mary Haynes

Arthur and Elisa Heinricher

Elizabeth Hendrickson

Cynthia Henshaw

Jay Himmelstein and Ellen Ruell

Marie Hobart and

William Kadish

Frannie, Bob, and Lily Hodge

Alanson and Nina Holton

*The good works you
do encourages us!*

12/15 Dave and Emily
Hutcheson, Weston

\$100 to \$499

George and Stacy Adams

Jerry and Sue Albertini

Warren and Janet Anderson

S. Jane Arntz and

Ted Del Donno

George and Douglas Balko

Christy Barnes and

Robert Bertin

Mr. and Mrs. William F. Barrett

Lydia and Wes Barter

Daniel and Beverly Baxter

Richard Beaudreau and

Beverley Renaud

Steve Bennett and

Victoria Triolo

Robert Bennett

Dory Huard
 Phil Hubbard and Iva Kazda
 Tom and Becky Johnson
 Jim Kalloch
 Jeff and Pat Keay
 Meredith Kern and
 Chris Williams
 Patricia Kiely and
 Diane Galipeau
 Daniel and Debra Kilpatrick
 Dave and Eileen Kneeland
 Art and Pat Korandanis
 Dmetro and Dotty Kormeluk
 Elizabeth Kunhardt and
 Louis Swan

Lakeview Engineering Assoc
 Ronald and Susan Leger
 Leos Vac and Miele, Inc.
 Albert Lindquist

Ann Lisi and Joel Greene
 Stephen and Valerie Loring
 Robert and Annette Loring
 Dr. Maurice Martel
 B. Eugene and Barbara
 McCarthy

Rick McCarthy
 Ken and Deb McDonnell
 Hugh McElaney

John McKenna
 Mexicali Fresh Mex Grill

Douglas and Diane Meystre
 Kathy and Henry Michie
 David and Sara Mitchell

Carol and Jack Moore
 Dick and Linda Morse
 Nals Paint Center

Dale and Jason Newton
 Dave and Chris Nichols

Joseph and M. Barbara
 O'Connor

Ralph O'Grady

Dorothy G. Ohlson

Hank and Vivianne Ouellette

Patricia and Joseph Oyer

Kathy and Spike Paranya

Mike and Rachel Peckar

Peder and Diane Pedersen

Carlton Perry

Robert and Kathleen Peterson

Everett Pierce and Nancy
 Hargreaves-Pierce



Retired and lots of time to give. Call anytime.

4/15 Catherine Jackson, Holden

Larry and Faith Pistrang
 Stephen and Cynthia Pitcher
 Joan and John Platt
 Stephen and Lynne Poole
 Jim and Diane Potter
 Gwen Pratt
 Frank and Anne Puffer
 Bruce Raboin
 Nancy L. Rayla
 Regional Fire Safety LLC
 Craig and Tracy Reynolds
 Wayne Ridley and
 Peggy Prynosi
 Mary Ann Riendeau
 Gareth and Julie Roberts
 Irene R. Roberts
 Joanne Root
 Rutland Lions Association Inc.
 Joerg and Lisa Schiemann
 Fred Schwartz
 Deborah Seuss
 Karen Shapiro and
 David Rosenfield
 Ruth Shapiro
 Kathleen Sheehan and
 Peter Weiskel
 Orville and Carolyn Sheldon
 Paul and Joanna Sherblom
 Will Sherwood and
 Blaine Bershad
 Robert and Jo Anne Shyllberg
 Jean and William Sifleet

Richard and Madeline Silva
 Jack and Peggy Snow
 Roger and Ann Spaulding
 Diane Spindler
 Alan Stanhope
 Sterling Garden Club
 Mark and Regina Stoker
 Bill and Jean Stuart
 Joseph and Susan Sullivan
 Susan Sussman and
 David Ammerman
 Edna Tilander
 John and Sandra Tremblay
 Herbert and Jean Varnum
 Douglas and Martha Waite
 Linda Waldron
 Homer and Elizabeth Walker
 Ian Warren
 Judith Peachy Warren
 West Boylston Seafood
 Clare and Steve White
 Bruce and Kathy Wickman
 Dan and Kathy Wiechec
 Dick and Ann Williams
 Carrie A. Wood and
 Edward A. Nobrega
 Worcester County Deputy
 Sheriffs
 Robert and Joan Yood
 Francis and Geraldine Zecco

\$41 to \$99

AAA Northeast
James and Eleanor Adams
James and Denise Adams
Allatar Hardware & Software Solutions
John M. Allen
Arthur Allen and Jennifer Bravo
Robert and Mary Ambrose
Cliff and Mary Ellen Anderson
Paul and Marilyn Audette
Janice Auger
Bruce and Janet Baker
Marilyn Bancroft
Dan and Jackie Baran
Graham Barnard
Karl and Elise Barry
Laurie and Brian Beam
Barbara Beck



John and Megan Bernier
Dianna Berube
Bryan and Maureen Blanchard
Joanne Jeneski
Jere and Rachel Bradley
William and Caroline Brooks
Robert and Nancy Cain
Alice Caldwell
Barbara C. Calhoun
Barbara Campbell
Sandy Carlson
Carrie Dolmat-Connell
Charles and Debbie Cary
Luigi and Susan Ceccacci
Janet Chapman
Patricia Charbonneau
Brian and Heather Cline

Robert and Sharon Collins
Lynne Connor
Sherry Conrad and Joe Petrucci
Timothy and Cheryl Coonahan
Rob Cowles and Susan Southard
Dean and Debbie Croucher
Charles F. Daly
Debbie DePratti
Cecelia Dickman
Fred and Carma DiLiddo
Jennifer Dineen
Len and Sue DiNoia
Pam and Don Dobeck
Howard Drobner
Betty J. Eddy
Dale Faraday
Norma Johanson
Arlene Johnson-Drawbridge
Victor Johnston
Paul Jolie
Dana and Maureen Jones
Jordan Dairy Farm
Michael and Anne Korjeff
Ted and Jennifer Kremer
Patricia and Stephen Kruglewicz
Larry and Pat LaChance
Jessica E LaFrance
Dave Laska
Rick and Jacquie LeBlanc
Diane Leonard-Senge and Peter Senge
Jeffrey and Otilie Levine
Roland and Cheryl L'Homme

*Thank you for all your continued efforts
in building and maintaining this
gem of Central Mass.*

4/15 The Pinkes family, Jefferson

Edward and Dorothy Faszewski
David and Linda Favreault
Richard and Anita Fenton
Jeanne and John Gallagher
Bill and Julie Gauld
Get Out Fitness
Jeremy Golding and Michele Roberts
Gordies Automotive Repair
David and Elaine Gustafson
Hallahan Family
Scott R. Handler
Kenneth B Hedenburg
Frank and Ann Heinemann
Scott and Kelly Henderson
Rick and Clare Hendra
Tom and Ruth Hiller
Sally and Edward Holden
Holden Garden Club
Merryl Havens
Charles Homan and Moira Rouse
Nick Horton and Julia Riseman
David Hummon
Catherine Ward Jackson
Jenkins Inn & Restaurant
Jennifer Lish Lebeaux
James and Ann Litwinowich
Roger Livingston and Sally Mitchell
Margaret Lock
Alton and Kate Lombard
George and Margaret Marshall
Mass Audubon – Broad Meadow Brook
Edward Matalka
Russ and Nancy Mattson
Michael and Nina Mazloff
Leo and Brenda McCabe
Jim McGovern
Bill and Mary Jane McKenna
Tom McKoan
Cynthia Mellor and Nancy Perla
Miles Funeral Home
Greg and Kathy Mills
Sandy Moffet
Carol and George Morin
Julia Morrison
Tom and Vanda Mullins
Brian and Lisa Murphy
Laura Myers
Marie Newcomb

Ed Novak
 Brad and Phyllis Nutting
 Jake and Cathy O'Connor
 Oconnor's Restaurant
 Joan Manuel Offroy
 Nancy Oldakowski
 Carol and Bob Oliver
 Michael and Shari Oliver
 Oriol Health Care
 Conrad and Anne Ormsbee
 Charles and Sandra Paddock
 Corey Pasquale
 Norman J. Penney
 Mike Perkins and
 Vanessa Brown
 George and Paula Perry
 Robert and Barbara Pezzini

*Keep up the good work!
 Getting many people to
 enjoy the outdoors is
 a wonderful thing.*

4/15 Chuck Daly, Auburn

Jonathan Phelps
 Mark Phillips
 Pine Acres Resort
 Sharon and Eric Plickert
 Greg, Cathy, Lauren and
 Rachel Pray
 Dick and Gail Pryce
 Joe and Sarah Ribeiro
 Kent and Rachel Rissmiller
 Clay Rives
 Ron and Cathy Rosenstock
 Rota Spring Farm Ice Cream
 Elana Rudavsky and Avi Fischer
 Rutland Volunteer Fire Brigade
 Joe Sansoucy
 Joanne Savignac
 Paul and Susan Schlaikjer
 Greta M. Schnee
 Dr. Paul and Zelda Schwartz
 Peter and Karen Silvia
 Charles Skillings
 Kevin, Carol and Kelina Smith
 Kirsten Smith
 Eliot and Paula Sommer
 David and Becky Spanagel
 John and Deborah Staruk

Susan and Steven Staudaheer
 Marion Stoddart
 Margos and Janet Stone
 Carolyn and James Stone
 Lissa Story
 Joan Strang
 Janet Such
 Sunnyside Ford
 Tom and Lisa Sutter
 Dave and Carol Sweetman
 The Manor & Draught House
 Pam Thomas-Nielsen
 Bob and Brenda Thompson
 Phil and Josephine Truesdell
 Stephen Uminski
 Lisa and Ted VanLiew
 Jeanine Vitale
 Chris and Marcia Warrington
 Robert and Carolyn Welch
 Bruce and Kate Wells
 Richard Welsh
 West Boylston Insurance
 Agency Inc.
 Richard and Phyllis Whitten
 Norma Wiggins
 Dick Williamson
 Dawn and Harry Williston
 Kristina Wilson and
 David Geist
 Jonathan and Annemarie
 Woodward
 Edward and Grace Yaglou

UP TO \$40

Donald and Janice Abare
 Kimiko Ise Abramoff
 Rick and Darcy Adshead
 Mary Ago
 Peter Alden
 Arlene Aldenberg
 Margaret Allard
 Doreen L. Amaral
 Paul and Diane Anderson
 Joel Angiolillo
 John and Lynn Armstrong
 Annette M. Aubertin
 Fran and JoAnn Audette
 Richard and Shirley Avery
 John Axelson
 Christian and Ingeborg
 Baehrecke
 James and Janet Bartlett



Jan Bartlett Malcolmson and
 Jack Malcolmson
 Melissa and Joe Basmaji
 Malcolm and Amy Beauvais
 Dale and Paula Beaver
 Alan and Karen Bebkka
 Laura Beckwith
 Jane and Gary Beisaw
 Youl and Kim Bellil
 Carolyn Bellil
 Sam Belluardo
 Wayne Bennett
 Edmond and Nancy Benoit
 Donald F. Berth
 Krista and Van Murphy Berube
 Diane P. Bevilacqua
 Donna M. Bevilacqua
 Richard Bisk
 Phil and Bonnie Bissell
 Brian Bjorklund
 Joshua Black
 Paulette Bluemel
 Grace Blydenburgh
 David and Sandra Bohlin
 Thomas and Pauline Boyle
 Alan and Barbara Brandes
 Kathy Brennan
 Philip Brewer
 John and Dawn Budd
 Joseph F. Bullan
 Donald Burn and Nancy Burke
 Michael Cahill
 Nelson Calkins, Jr.
 Ken and Nancy Cameron
 Al and Kathy Carlin
 Laura Carney
 Ron and Nancy Carson

Stephen and Sheryl Chapman
 Barbara C. Chellel
 Paul and Wendy Chieffo
 Carol and Arthur Chin
 Leslie Choquette
 Ken and June Clarkson
 Marie and Robert Clemente
 Kris and Veronica Cloyd
 Kathleen Coggins
 Joe Collins
 Michael and Stephanie Collins
 Felice Collins
 Richard and Deanne Comeau
 William Connor
 Cathleen A. Corcoran
 Gwendolyn Coutu



Andrea and Anthony Couture
 Aileen Cox
 Stephen and Rita Crimmin
 Frederick G Crocker, Jr.
 Bob and Sue Crockett
 James and Linda Cronin
 Cheryl Martin Cronin
 John Cruz and Ann Sweetman
 Jim and Beth Cunningham
 Thomas and Flora Cussimanio
 Roy G. Dahlstrom
 Holly Daley
 Joe and Zabelle D'Amico
 Joe and Nancy Davenport
 Anne and Scott Davis
 Susan Daws and Barry Carden
 Pat DeMaria
 Jim Demetry and Sue Stafford
 Ann Desmarais
 Jim Dickman
 Joe and Carol DiGregorio
 James and Pauline Dillon

*We LOVE the rail trail
 and the good work you
 do. It is such a positive
 part of our town.*

11/15 Carl and Diane Haarman,
 West Boylston

Phyllis DiMarzio
 John and Thea Doherty
 Katherine Doherty
 Daniel Doiron
 Pat Donelan
 William and Andrea Dowd
 Tricia Droney and Doug Johnson

Thomas Dufault and
 Elizabeth Brennan
 Robert W. Duffy
 Marilyn Dufresne and
 Don Bullens
 Mark and Cynthia Dunbar
 Ian Duncan
 Evie DuVal
 Andrew Dzaugis and
 Carolyn Droser
 Libby Easton
 Dan and Nancy Elder-Wilfrid
 Dorothy Ellis
 Nancy A. Ellis
 Ramey and Carol Erickson
 Jane Erickson
 The Erskine Family
 Gerald and Lauren Espe
 Timothy Ethier
 Steven H. Evilia
 June Fagerquist
 Veneta Farina
 Bill and Donna Fay

Keith and Clare Felton
 Kim Ferguson
 Michael G Ferraiuolo
 Richard Ferrante
 Gilman Field
 Robert Fippinger and Ann
 Kaplan-Fippinger
 Mel and Marisa Fitzpatrick
 Michael and Mary Flanagan
 Thomas M. Flannagan
 Bill and Maureen Floyde
 Chuck and Kris Foley
 Don and Carol Follansbee
 Robert H. Fraser
 Andrea Freeman and Tim Silva
 Timothy and Elizabeth French
 Carl Friend and Diana Engelbart
 Shari Frigon
 Paul and Donnie Funch
 Marybeth Gagne
 Jose and Joanne Garcia
 Warren and Gloria Gardner
 Becky Gardner
 Margaret Gargulinski
 John Gau Jr.
 Babette and David Gehnrch
 Michael Gennert
 Bill and Bonnie Gibbs
 Stephanie Giguere
 Cindy Gingrich and
 Richard Baker
 Joe and Kathi Giotta
 Evelyn Glazebrook
 Karin Glidden
 Bruce Gobi
 Joyce and Rich Godfrey
 John and Karin Goins
 Philip Gold
 Aaron and Beverly Goodale
 John and Sue Gouin
 Artie Goulet
 Cindy and Evan Graber
 Dee Anne and Phil Grebinar
 William and Karin Green
 Dave Greenslit
 Christine Gregoire
 Nancy and Simon Gregory
 Francis X. Gribbons
 Peter Grigg
 Maureen and Theodore
 Gustafson
 Carl and Diane Haarmann

Mark H. Hager
 Clyde Hager
 Steve Hair
 Kimbal and Becca Hall
 Jeffrey and Catherine Ham
 Fred and Rebecca Hamel
 Persis G. Hamilton
 Bengt Hansson
 Bill and Judith Haskell
 Mark Hatch and Linda
 Delibertis-Hatch
 Vaughn and Ingrid Hathaway
 Paul E. Hennessey
 William and Erika Higgins
 Stacy Hill
 Jeff and Yelena Himmelberger
 Allen and Carol Hoffman
 Linda and George Hoffmann
 Charles and Beth Hoglund
 Sandy Holloway
 Marshall and Susan Horwitz
 Henry Hulick
 Robert Hunt
 Audrey Hunter



Barbara and Raul Laborde
 Germaine E. Lambergs
 Joan Lane
 Lisa Lange
 Robert P. LaPorte
 Karen F. Lavallee
 Rosalie and Phil Leaman
 Susanna Lenzi
 Alan and Kathy LePain
 John and Janet Lepore
 Mark and Mayumi Lincicome
 Jeff and Frances Lind

Linda Masterman
 John Matheson
 Wayne McAuliffe and
 David Nowell
 Kevin and Cheryl McCarthy
 Craig McColl and
 Julianne McManus
 Kim McCoy
 Deborah McCrohon
 Caroline McHugh
 Barrett and Shirley McIntyre
 John F. McPherson
 Bruce Mendelsohn and
 Heather A. Thompson
 Francis and Frances Meringolo

*We really appreciate all that you've done.
 It's been wonderful to watch the rail trail
 developing over the years. Thanks!*

12/15 Richard Beaudreau and Beverley Renaud, West Boylston

Andrew Hwang and
 Constance Bradley
 Donald Inglis
 Nancy and Mike Isabella
 Margaret and Robert Israelian
 Don and Patty Jacobs
 Harry Johnson Jr.
 Stuart Johnstone
 Judy and Dennis Kane
 David and Nancy Kaplan
 Dave and Estelle Keast
 Patricia Keith
 David and Sandra Kent
 Jill Phelps Kern
 Ralph and Gail Kimball
 Marie-Louise A. Klose
 Mary A. Kolofsky
 Barbara Koppetsch
 Walter Kuklinski
 Marianne Kusa-Ryll

Little Wonders Day Care
 John and Maureen Locke
 Al and Marge Long
 Ronaldo and Grace Lu
 Wendy MacLean and
 Howard Youmans
 Gordon and Barbara MacPhee
 Rosemarie S. MacPherson
 Charlie Madden
 Paula and Mark Madison
 Peter Magner
 Robert and Marion Mahar
 Tim and Mary Malone
 Roger and Florence Marchand
 Jeanne and Michele Marin
 Mary Marro
 Ron and Elaine Marsh
 Eileen Marsh
 Gayle Marshall
 William H. Mason

Shirley Merken
 Robert and Mary Merritt
 Richard T Metterville
 John and Pat Michalak
 Michael and Kathy Michalak
 David and Linda Miller
 Nancy Miller
 Troy Milliken
 Christopher C. Milliken
 John Minott and Susan Daneau
 Anne and Dennis Moore
 Alan Moore
 Carl and Nancy Moore
 Brian Moore
 John Mooshian
 Stephen and Beth Moro
 Scott Morrison
 Andrea Murano
 William and Barbara Narcisi
 Nashoba Financial Services
 Diane Nassif
 Lorraine Neilan
 Newbury Investment Partners
 Lois and Fred Oak

Jim Obey
 James O'Connor
 Robert and Sharlene O'Connor
 Michael and Maria O'Connor
 Peter and Sharon Ojerholm
 John and Loretta Oliva
 Steve and Kathy Olson
 Janet D. Olson
 Ken and Dorothy Openshaw
 Stuart and Karen Ormsbee
 Mary and Michael O'Sullivan
 Lynne Ouellette
 John and Susan Pacek
 Francisco and Trudy Palacios
 James and Kathleen Patacchiola
 Lynn and Chuck Patterson
 Nancy Paul
 Robert and Audrey Paulson
 Bruce and Betsy Pennino
 Arthur and Jayne Perkins
 Judith E. Pernice
 Jack and Marie Perreault
 John Peterson
 Tom and Rita Pierce
 John and Rae Pileggi
 Bill and Danielle Pinkes
 Tom and Marilyn Pitman
 Patricia Stepanski Plouffe
 Stephanie Poh
 Joel and Zenie Popkin
 Larry and Patt Popple
 Nicholas and Marilyn Powlovich
 Robert L. Preston
 Stephen Provost and
 Maria Paradis
 Jane and Gary Putnam
 James and Karen Putnam
 Ronald and Diane Putnam
 Robert Quevillon
 Bill and Mary Jane Rasku
 William Rastley
 Timothy Regan
 Michael Renshaw
 Everett Reynolds and
 Lynda Lambert
 Joseph Reynolds
 Milton and Betty Ripley
 Arthur and Barbara Roberts
 John Root
 Bernard and Shirley Rotti
 Jennifer Rowe-Mitchell and
 Thomas Mitchell

Allen and Ruth Rubin
 Tom and Barbara Ruchala
 Bruce and Judy Ruderman
 Kathleen R Runstrom
 Jonathan Ryan
 Catherine Ryan
 Richard Salls
 Sam and Kathleen Salvatore
 Joe Santa Maria
 Amanda and Daniel Sayut
 Richard Scarpignato
 Jim and Laura Schakenbach
 Richard Schmidt
 Valeda Schmucki
 David and Beckley Schowalter
 Valerie and Mark Schrank
 David and Martha Schwarzkopf
 Gretta Scully
 Rosemary Scully



Jessica Seem
 William and Laura Sefton
 Janet Segur
 Edna Sexton
 Bonnie Shayler
 George and Paulette Sherrill
 Edward and Maryellen Sikonski
 David W Simmerer
 Michele Simoneau and
 John Grote
 Hatheway and Richard Simpson
 Paul and Marilyn Sinibaldi
 Mark and JoAnn Sivazlian
 Suzanne Smith
 Terry Smith
 Eugenie Smith
 Dale Snyder and Patricia Noyce
 Sandra Sotak

*Thank you for the
 awesome rail trail. My
 only concern is
 the number of bicyclists
 who do not warn us
 when passing.*

4/15 Gary and Jane Putnam,
 Jefferson

Dick and Ruth Spaulding
 Craig and Jen Stanovich
 Kenneth and Winifred Starbard
 Brian D. Steinberg
 Beth Stephenson
 Lorraine Stewart
 G. Wayne and Janet Stoddard
 Andrea Stone
 Deborah Strate
 Eric T Strom
 Charlie and Karen Suffin
 Robert Sulik and
 Kathleen Wood
 Jeff and Sandy Sullivan
 James F Sullivan
 Chloe Nester Sundberg
 Sheila Supernor
 Joan Swanson
 Ruth Sweeney
 David and Donna Talman
 Mark and Sharon Taubert
 Pat Taylor
 Yvonne Thibeault
 Don Thompson
 David and Carolyn Tinsley
 Lynne A. Tolman
 Ilene Torchia
 Roger Towne and Susan
 Landess-Towne
 Sheila Towne
 Teddy Trawczynski
 Louis and Mary Trostel Jr
 Kathy, David and Megan Troy
 David and Gail Truedson
 Bill and Elaine Trutor
 Virginia Ursin
 Robin Van Liew and Azim Rawji
 Patricia Vander Ploeg
 Lenny and Diane Waice
 Wayne Walker

Mary and Phil Warbasse
 Fred Warren, Sr.
 John and Carol Warrington
 Ed and Brenda Weathersbee
 Susan and David West
 Jim Wilkinson
 Holden and Fordyce Williams
 Nancy McClelland Wilson
 Helen Wisner
 Charles Witkes
 Martha Wolfe
 Jess Wolfe
 David and Sue Woodbury
 Leon A. Woodcock Jr.
 Rob and Shelly Woods
 Sanford and Barbara
 Wreschinsky
 Joan Zumpfe

BUSINESS MATCHING GIFTS

Allegro MicroSystems Inc
 Saint Gobain

IN MEMORY OF

in memory of Richard Bieksha
 Richard and Janice Helle

*in memory of Edward
 Bracebridge*
 Richard and Janice Helle

in memory of Eleanor Bucklar
 Richard and Janice Helle

*in memory of Charlie
 Campbell*

Jim and Colleen Abrams
 Richard and Janice Helle

in memory of John Cantor
 Greta M. Schnee

in memory of Pauline Cloutier
 Jim and Colleen Abrams

*in memory of Rich DeWitt and
 Steven DeWitt*

Jim and Colleen Abrams

in memory of Scott Elms

Jim and Colleen Abrams
 Len and Sue DiNoia

Evelyn Glazebrook
 Alanson and Nina Holton
 Ted and Jennifer Kremer
 Joan Manuel Offroy
 Stephen Provost and
 Maria Paradis

in memory of Sue Hall

Jim and Colleen Abrams

*in memory of Dr. Wacław
 Hojnoski*

Richard and Janice Helle

in memory of Gerald Joyce

Richard and Janice Helle

in memory of Rita Martel

Maurice Martel
 Colleen Abrams

*in memory of Dora and
 Stan Miller*

Betty J. Eddy
 Carolyn and James Stone
 Jim and Colleen Abrams

*in memory of Walter B. &
 Beatrice R. Neuburg*
 Ann Neuberg

*in memory of Ralph Gager
 Pendleton*

Norma Wiggins

in memory of John Rives

Judith Peachy Warren

*in memory of Sandra
 McVicker Rosenfield*

Karen Shapiro and
 David Rosenfield

*in memory of Martha
 Simmerer*

Jim and Colleen Abrams

*in memory of Jack and Jean
 McDonnell, and
 Fred Williams*

Ken and Deb McDonnell

IN HONOR OF

*in honor of S. Jane Arntz,
 Christy Barnes, Gordo Elliott,
 Dave Fitzpatrick,
 Paul Hennessey, Jeff Keay,
 Ken McDonnell, Troy
 Milliken, Carol Morin,
 Hank Ouellette, Viv
 Ouellette, Mike Peckar,
 Ruth Spaulding*

Jim and Colleen Abrams

*in honor of Leonard and Linda
 Anderson*

Lisa Hugo

in honor of Mike Peckar
 Yvonne S. Brown

*in honor of Tom and Ruth
 Hiller*

Fred J. Shuster, CIMA

in honor of Ed Yaglou
 Kathy and Spike Paranya

GRANTORS: FOUNDATIONS AND GOVERNMENT

George I. Alden Trust

Town of Holden

Town of Sterling

*On we go to another
 20 years!*

12/15 Claire D. Gurney,
 Holden





P.O. Box 121
Holden, MA 01520

Return Service Requested

21 Years and Growing

Non-Profit Org.
U.S. Postage

PAID

Holden, MA 01520
Permit #15